



**GE Lighting**



**Biax™ Extra Mini**

Electronic Compact Fluorescent Lamps

**ENERGY SAVING LIGHTING**

# A new extra mini size setting a new standard in quality compact fluorescent lighting

The most advanced GE Lighting technology brings the industry's most miniaturised and complete range of compact fluorescent lamps. The Biax™ Extra Mini family's compact size allows them to fit almost anywhere that incandescent bulbs are currently used. The superbly engineered shapes of these Biax™ Extra Mini lamps are unique, enabling them to fit everywhere from table lamps to wall and ceiling fixtures.

## Real size comparison



The new GE Biax™ Extra Mini 11W



Standard lamp  
60W



Traditional energy saving lamp, 11W



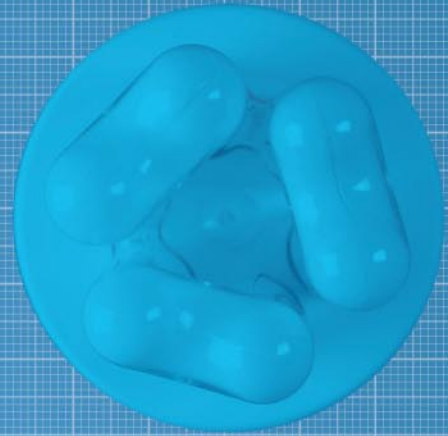
Up to **27%** reduction in lamp diameter



The new GE Biax™ Extra Mini  
11W



Standard light bulb  
75W



Traditional energy saving lamp  
15W



A **MAJOR** reduction in size



11W traditional  
vs. New Extra Mini



15W traditional  
vs. New Extra Mini



20W traditional  
vs. New Extra Mini



## Long 15 year life – 15 times longer than ordinary bulbs

Just like the Caribbean turtle, GE Biax Extra Mini will live to a very old age. GE's Extra Mini lamps last about 15 times as long as an ordinary light bulb. Longer life means fewer burned out lamps to replace and reduced labour and maintenance costs.



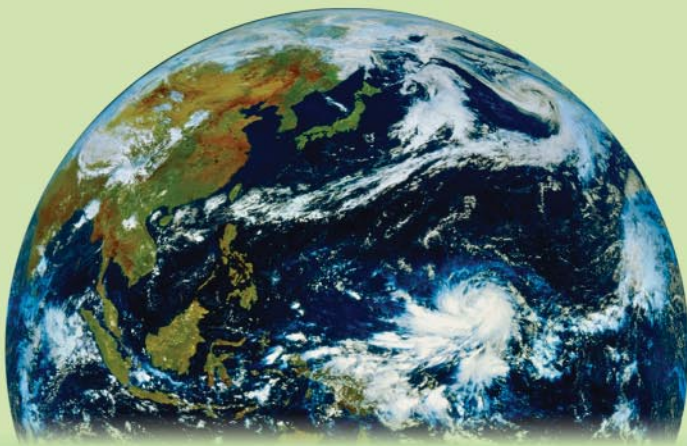
## Up to 80% energy cost saving

GE's Extra Mini uses around 20% of the electricity versus ordinary light bulbs. Saving energy means saving money. Also you don't have to sacrifice light to save watts. GE Extra Mini lamps give you as much light as the standard bulbs they replace.



## Protects the environment

If you are using less energy, you will be helping to protect the environment too. As one of the first companies who developed lighting efficiency initiative programs, GE Lighting has been taking the lead in the preservation of earth's precious resources through energy saving products and recycled packaging that reduce the reliance on fossil fuel fired electricity.



## Variety of types available

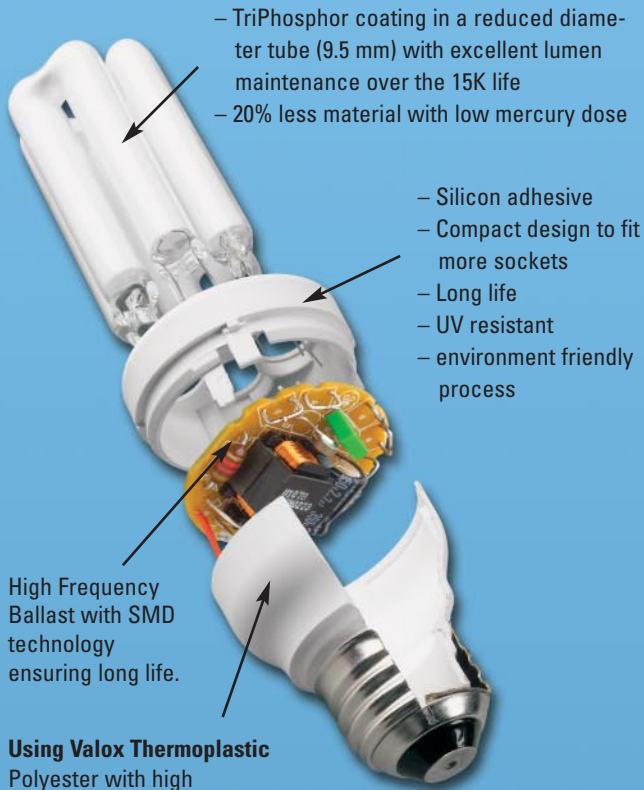
GE's Biax Extra Mini range features standard types, plus A-line, candle and reflector.



- A-line CFL looks similar to an incandescent bulb, yet provides outstanding energy efficiency and long life.
- Features attractive candle shape
- Available in R63 for downlighters

# GE Extra Mini Biax Electronic Compact Fluorescent Lamps.

Technology and quality you can depend on



- TriPhosphor coating in a reduced diameter tube (9.5 mm) with excellent lumen maintenance over the 15K life
- 20% less material with low mercury dose

- Silicon adhesive
- Compact design to fit more sockets
- Long life
- UV resistant
- environment friendly process

High Frequency Ballast with SMD technology ensuring long life.

**Using Valox Thermoplastic Polyester** with high mechanical, thermal and electrical properties with excellent UV resistance and dimensional stability.

## • Why Biax Extra Mini Lamp?

Previously, many of the advantages of the compact fluorescent lamps were theoretical, as the conventional compact fluorescent lamps were significantly larger and replacement was not physically possible, or compromised the original lighting performance to such an extent as to be undesirable. GE's Extra Mini lamps are the next generation of Energy Saving lighting technology and offer substantial benefits over traditional energy saving bulbs.

## • Compactness

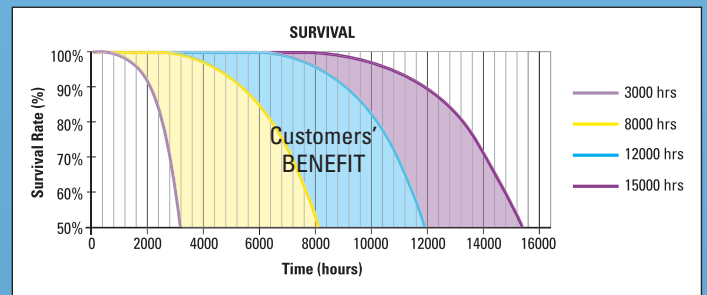
GE's new, re-engineered Extra Mini lamps are now shorter, narrower and of lighter weight. Extra Mini's have the potential to replace traditional incandescent, halogen and compact fluorescent. The smaller size also gives greater design flexibility for luminaire manufacturers.

## • Reliability

The new, improved Biax Extra Mini lamp's reliability is exceptional from the first day of operation, resulting in fewer early failures, thus offering additional financial savings.

## • Long life

Most Energy Saving lamps have a rated average life between 3 and 12 thousands hours. GE's Extra Mini lamp's average life ranges from 8 to 15 thousands hour, so maintenance costs are minimized.



## • Energy saving

High luminous efficiency reduces energy costs.

Besides home lighting, these Extra Mini lamps are ideal for retrofit commercial and industrial applications. High efficiency Biax Extra Mini lamps give people and workers the light level needed for increased productivity. The replacement of traditional incandescent and halogen lamps reduces power consumption by 75%, resulting in more light without overloading the electrical system.



# GE Electronic Biax™ Extra Mini Lamps Range

Watt	Cap	Length mm	Diameter mm	Description	CCT K	CRI Ra	Life hours	Lumen	Energy Efficiency	Pack Qty.	Product code Blister	Box	
<b>220-240V</b>													
<b>Stick</b>													
9W	E14	115	42	FLE9TBX/XM/827 E14 220-240V	2700	82	15000	480	A	1/6	10598	10613	
				FLE9TBX/XM/840 E14 220-240V	4000	82	15000	480	A	1/6	10616		
				FLE9TBX/XM/865 E14 220-240V	6500	82	15000	480	A	1/6	10619		
	E27	115	42	FLE9TBX/XM/827 E27 220-240V	2700	82	15000	480	A	1/6	10597	10612	
				FLE9TBX/XM/840 E27 220-240V	4000	82	15000	480	A	1/6	10615		
				FLE9TBX/XM/865 E27 220-240V	6500	82	15000	480	A	1/6	10618		
	B22	115	42	FLE9TBX/XM/827 B22 220-240V	2700	82	15000	480	A	1/6	10596	10611	
				FLE9TBX/XM/840 B22 220-240V	4000	82	15000	480	A	1/6	10614		
				FLE9TBX/XM/865 B22 220-240V	6500	82	15000	480	A	1/6	10617		
11	E14	115	42	FLE11TBX/XM/827 E14 220-240V	2700	82	15000	600	A	1/6	10601	10622	
				FLE11TBX/XM/840 E14 220-240V	4000	82	15000	600	A	1/6	10625		
				FLE11TBX/XM/865 E14 220-240V	6500	82	15000	600	A	1/6	10629		
	E27	115	42	FLE11TBX/XM/827 E27 220-240V	2700	82	15000	600	A	1/6	10600	10621	
				FLE11TBX/XM/840 E27 220-240V	4000	82	15000	600	A	1/6	10624		
				FLE11TBX/XM/865 E27 220-240V	6500	82	15000	600	A	1/6	10628		
	B22	115	42	FLE11TBX/XM/827 B22 220-240V	2700	82	15000	600	A	1/6	10599	10620	
				FLE11TBX/XM/840 B22 220-240V	4000	82	15000	600	A	1/6	10623		
				FLE11TBX/XM/865 B22 220-240V	6500	82	15000	600	A	1/6	10626		
15	E27	128	42	FLE15TBX/XM/827 E27 220-240V	2700	82	15000	900	A	1/6	10607	10632	
				FLE15TBX/XM/840 E27 220-240V	4000	82	15000	900	A	1/6	10635		
				FLE15TBX/XM/865 E27 220-240V	6500	82	15000	900	A	1/6	10637		
	B22	128	42	FLE15TBX/XM/827 B22 220-240V	2700	82	15000	900	A	1/6	10605	10631	
				FLE15TBX/XM/840 B22 220-240V	4000	82	15000	900	A	1/6	10633		
				FLE15TBX/XM/865 B22 220-240V	6500	82	15000	900	A	1/6	10636		
	20	E27	143	42	FLE20TBX/XM/827 E27 220-240V	2700	82	15000	1200	A	1/6	10609	10639
					FLE20TBX/XM/840 E27 220-240V	4000	82	15000	1200	A	1/6	10642	
					FLE20TBX/XM/865 E27 220-240V	6500	82	15000	1200	A	1/6	10645	
B22		143	42	FLE20TBX/XM/827 B22 220-240V	2700	82	15000	1200	A	1/6	10608	10638	
				FLE20TBX/XM/840 B22 220-240V	4000	82	15000	1200	A	1/6	10640		
				FLE20TBX/XM/865 B22 220-240V	6500	82	15000	1200	A	1/6	10644		
<b>GLS</b>													
9		E14	126	60	FLE 9TBX/XM/GLS/827 E14 220/240V	2700	82	8000	380	B	1/6	10648	10660
		E27			FLE 9TBX/XM/GLS/827 E27 220/240V	2700	82	8000	380	B	1/6	10647	10659
	B22	FLE 9TBX/XM/GLS/827 B22 220/240V			2700	82	8000	380	B	1/6	10646	10657	
11	E14	126	60	FLE11TBX/XM/GLS/827 E14 220/240V	2700	82	8000	550	A	1/6	10652	10664	
	E27			FLE11TBX/XM/GLS/827 E27 220/240V	2700	82	8000	550	A	1/6	10651	10663	
	B22			FLE11TBX/XM/GLS/827 B22 220/240V	2700	82	8000	550	A	1/6	10650	10710	
15	E27	139	60	FLE15TBX/XM/GLS/827 E27 220-240V	2700	82	8000	750	B	1/6	10655	10666	
	B22			FLE15TBX/XM/GLS/827B22 220-240V	2700	82	8000	750	B	1/6	10654	10714	
<b>Candle</b>													
5	E14	138	50	FLE5TBX/XM/CDL/827 E14 220/240V	2700	82	8000	Available in 2003		1/6	10672	10681	
	E27			FLE5TBX/XM/CDL/827/E27 220/240V	2700	82	8000	Available in 2003		1/6	10671	10679	
	B22			FLE5TBX/XM/CDL/827/B22 220/240V	2700	82	8000	Available in 2003		1/6	10670	10678	
9	E14	138	50	FLE9TBX/XM/CDL/827 E14 220/240V	2700	82	8000	380	B	1/6	10677	10684	
	E27			FLE9TBX/XM/CDL/827 E27 220/240V	2700	82	8000	380	B	1/6	10676	10683	
	B22			FLE9TBX/XM/CDL/827 B22 220/240V	2700	82	8000	380	B	1/6	10674	10682	
<b>Reflector</b>													
11	E14	123	63	FLE11TBX/XM/R63/827 E14 220/240V	2700	82	8000	280	B	1/6	10701	10707	
	E27			FLE11TBX/XM/R63/827 E27 220/240V	2700	82	8000	280	B	1/6	10699	10704	
	B22			FLE11TBX/XM/R63/827 B22 220/240V	2700	82	8000	280	B	1/6	10694	10703	



Please visit us on the web at [www.GELighting.com](http://www.GELighting.com)



GE Lighting is constantly engaged in the global quality process. A statistical quality system designated SIX SIGMA is applied across the board in all areas of the company from manufacturing through to sales. Moreover, the company's Environmental Management System certification to ISO 14001 guarantees application of the highest possible standards throughout the process of manufacturing light sources.



**GE Lighting**

GE Lighting is constantly developing and improving its products. For this reason, all product descriptions in this brochure are intended as a general guide, and we may change specifications time to time in the interest of product development, without prior notification or public announcement. All descriptions in this publication present only general particulars of the goods to which they refer and shall not form part of any contract. Data in this guide has been obtained in controlled experimental conditions. However, GE Lighting cannot accept any liability arising from the reliance on such data to the extent permitted by law.



and General Electric are both registered trademarks of the General Electric Company