

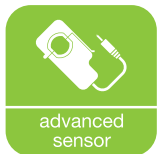


wireless electricity monitor

new



wireless transmitter



advanced sensor



heavy duty sensor



Wireless electricity monitor displaying instant power, costs and estimated CO2 emissions. It can also show historical and average data.

- Take control of your energy use
- Monitor the cost of using your home appliances and lights
- Discover and reduce the size of your carbon footprint
- Fun and educational for the whole family

efficient energy through technology...

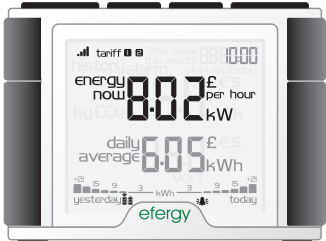
efergy



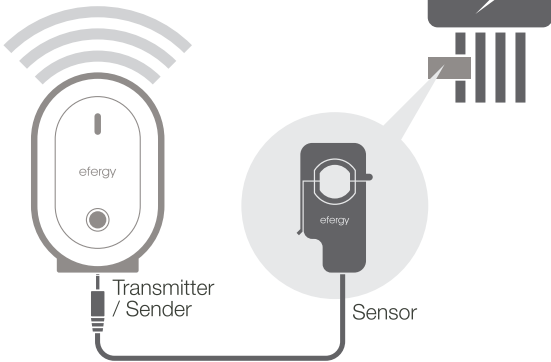
wireless electricity monitor

Save up to 20% off your electricity bill through greater awareness!

HOW IT WORKS



Portable Display Unit



INSTANT MODE

Transmission signal

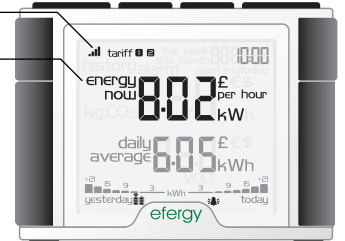
Instant Information

Push the **Mode Button** to change information being displayed from kWh to costs per hour

Battery warnings:

- Transmitter
- Display

Alarm on 🔔



HISTORY MODE

Days, weeks, months

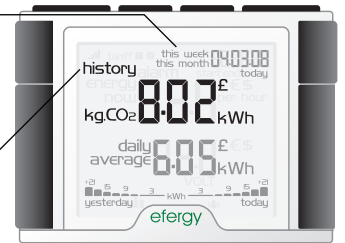
Push the history button to move from daily to weekly to monthly information

Use the **BWD** and **FWD** buttons to scroll between dates and compare consumption data

History

Push the **History Button** to access daily, weekly and monthly stored data

Push the **Mode Button** to change information display from kWh to costs and CO2 emissions



Compatible

Suitable for use with clip-on sensor or consumer unit transmitter.

Easy to Install

Designed to be installed either by consumer or professional.

Flexible

Valid for single & dual tariff.

Easy to Understand

Clear and simple graphical display.

Simultaneous Information

Average daily (energy and costs), instant Information (power and costs), historical consumption (energy, costs and CO2 emissions).

Discover

- How much electricity is being used at any given moment
- The total amount of money being spent on electricity
- The difference in electricity consumption by turning on and off various appliances
- How much money can be saved by reducing usage

Understand

- Daily average consumption
- Savings of 5%-20% off typical energy consumption
- Consumption history
- Carbon Footprint

Specifications

Model Name:	efergy elite
Frequency:	433.52MHz
Transmission Time:	6s, 12s, or 18s.
Transmission Range:	40m-70m
Sensor Voltage Range	110V-300V
Measuring Current:	50mA - 95A
Accuracy:	<8%
Memory:	64K
Sensor:	140 Amp

efergy.com

